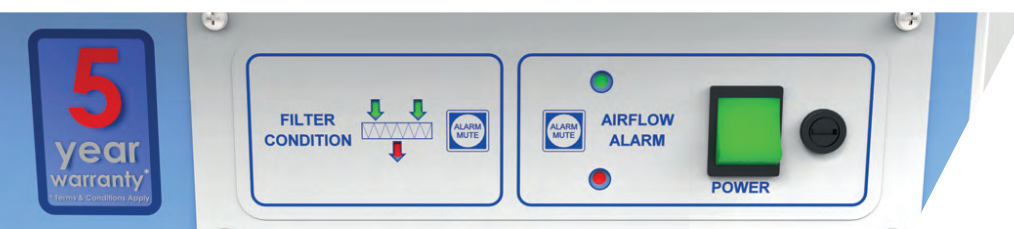
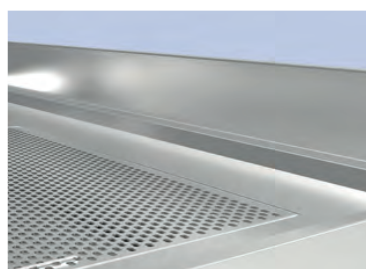
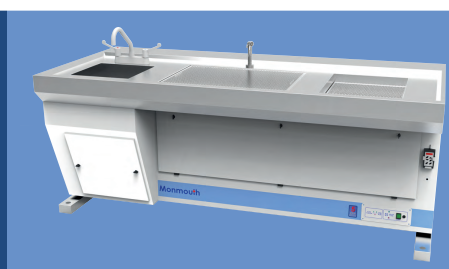
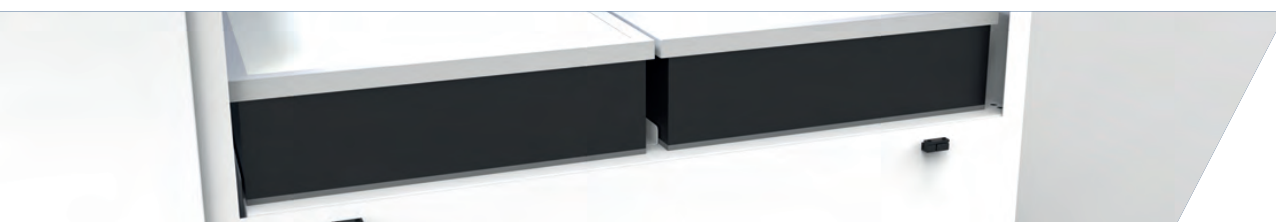


# CIRCLAIRE® DOWNFLOW & FORMALIN CONTAINMENT

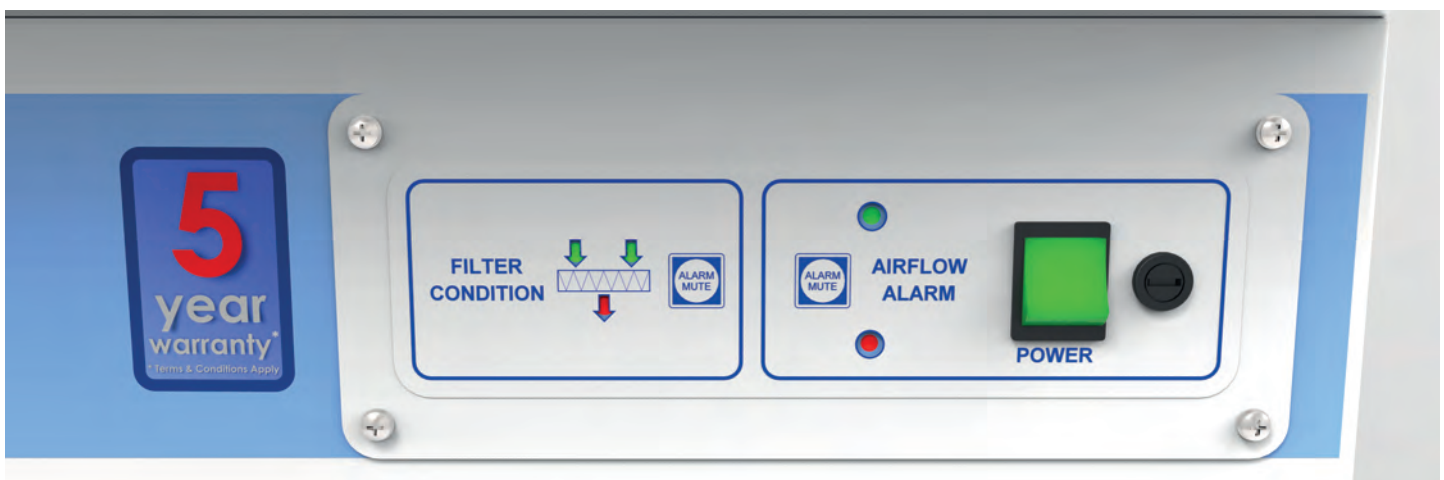
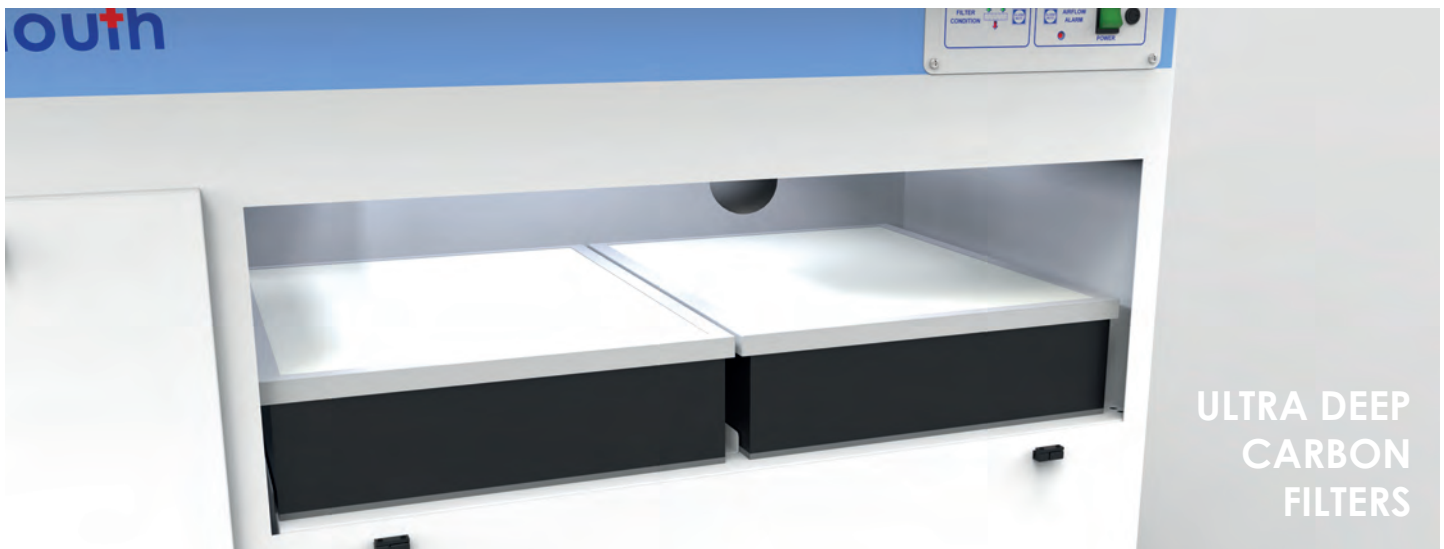


**Monmouth+**  
**Scientific**

**THE MARKET LEADER IN  
CLEAN AIR SOLUTIONS**



## DOWNFLOW CONTAINMENT



**Downflow benches and workstations capture fumes at source by utilising down draft air-movement technology.**

The units are compact and extremely easy to install. With a wide choice of activated carbon and HEPA filter types available the Circulaire Downflow workstations are suitable for many different laboratory, industrial and forensic applications.

Units are constructed for maximum reliability and strength. All work surfaces are manufactured from 316-grade stainless steel whilst the lower section is manufactured from zintec powder coated steel to prevent corrosion.

All systems are fitted with low airflow alarms and can optionally be fitted with filter saturation alarms to alert the operator to any maintenance requirements. All benches are simple to operate with all controls and safety alarms mounted on a single panel.

# FEATURES & BENEFITS

## ENVIRONMENT IN MIND

All Monmouth products are designed to have both low noise levels and low energy consumption to help your company stay carbon neutral.



## LOW AIRFLOW ALARM

Every model is equipped with an animated colour LCD Display showing that airflow is working within safe and calibrated parameters.



## 5 YEAR WARRANTY

All Monmouth products are designed and manufactured in the UK, and are covered by our industry leading 5 year warranty.



Stainless Steel Worksurfaces



Easy Change Main Filters



Ultra Deep Carbon Filters



Maximum Operator Safety

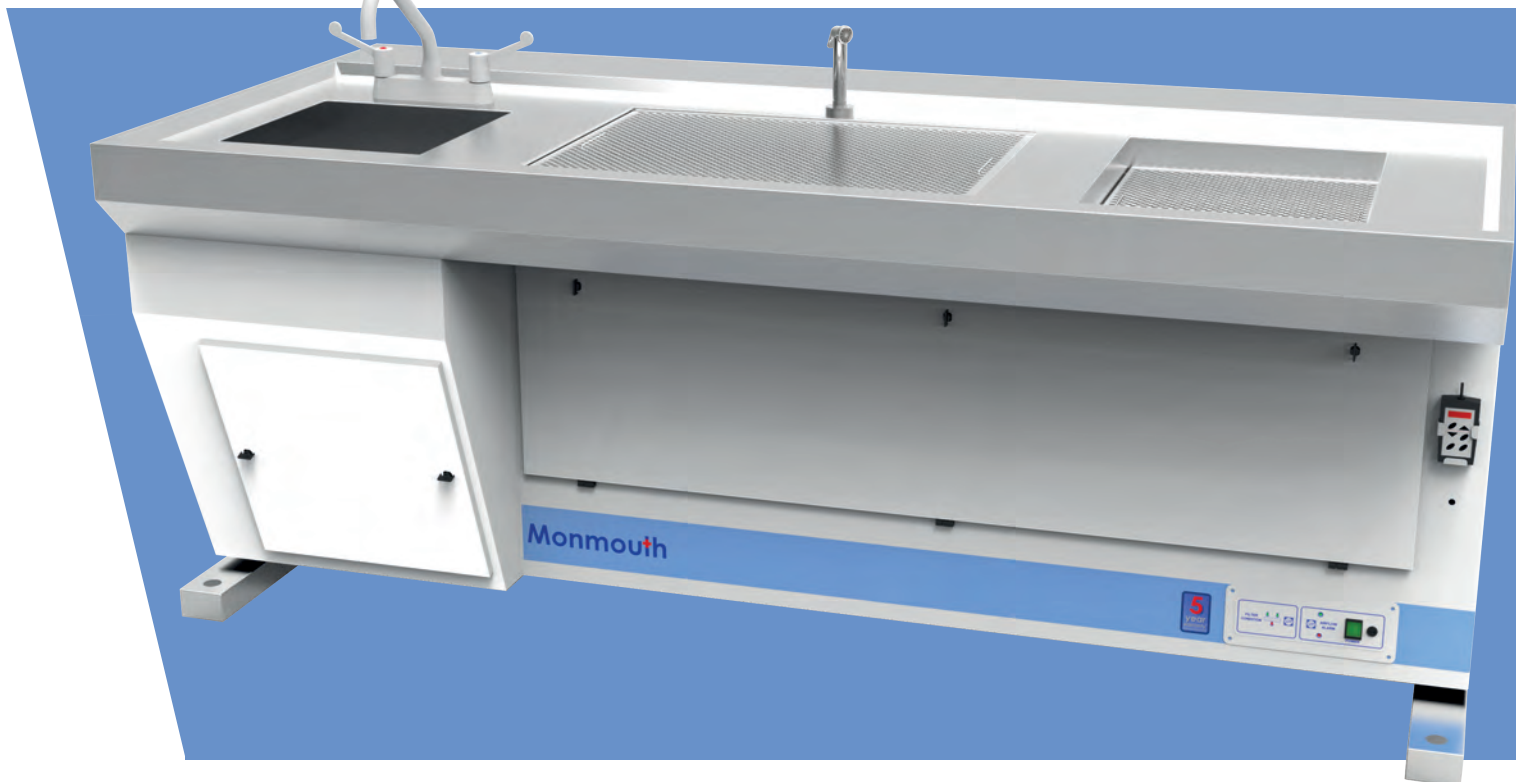


Large Unhindered Working Area



Chemical Storage Area



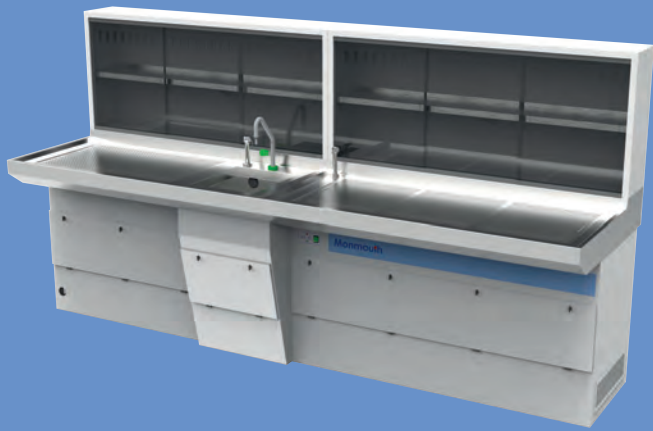


# CIRCULAIRE® DOWNFLOW WORKBENCHES

## Specification

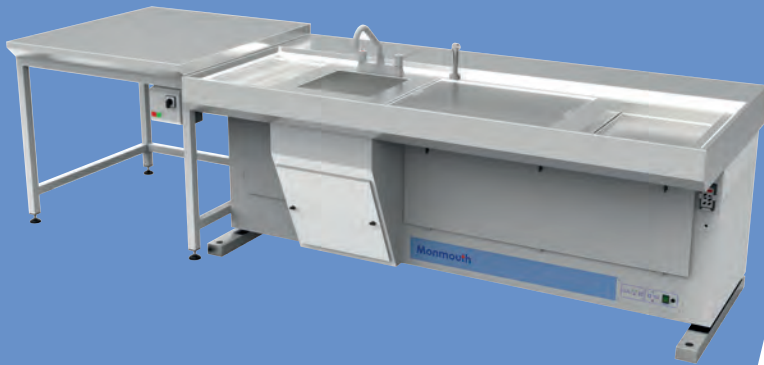
	DFB1000	DFB1200	DFB1500	DFB1800	DFB2000
<b>External Dimensions (W x D x H)</b>	1000mm x 750mm x 900mm	1200mm x 750mm x 900mm	1500mm x 750mm x 900mm	1800mm x 750mm x 900mm	2000mm x 750mm x 900mm
<b>Sink Dimensions (W x D x H)</b>	N/A		400mm x 350mm x 250mm		
<b>Ventilated Area Dimensions (W x D)</b>	800mm x 500mm	650mm x 450mm	700mm x 500mm	1000mm x 500mm	600mm x 450mm (2 no.)
<b>Electrical Height Adjustment</b>	800mm to 1100mm from Ground (Optional)				
<b>Construction</b>	Epoxy coated Zintec Steel Base with 316 stainless steel work surface and sink.				

## BESPOKE WORKBENCHES



### Example Downflow Bench:

- 3.1m Wide Fixed Height.
- Central Sink Unit.
- Cold Water Supply.
- 2 x Separate Ventilated Areas.
- Washdown Hose.
- Twin Shelved Ventilated Storage Area.



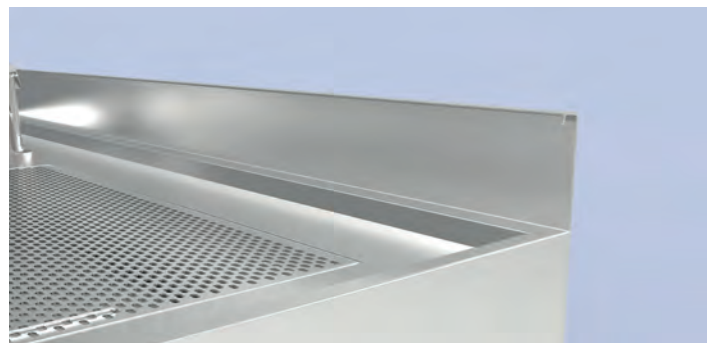
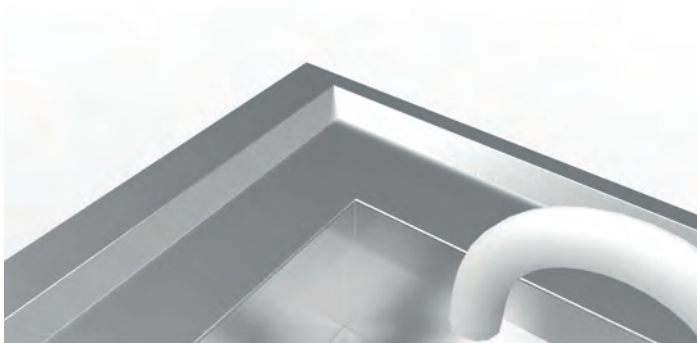
### Example Downflow Bench:

- Adjustable Height.
- Recessed Storage Area.
- Large Examination Area.
- Ventilated Sink including Mixer Taps.
- Washdown Hose & Ventilated Drainage Area.
- Fixed Height Writing Bench.

## OPTIONAL FEATURES

- Washdown Facility
- Water Supplies
- Electrical Height Adjustment
- Additional Filters

Contact our experienced team to discuss our wide range of bespoke options







## FEATURES & BENEFITS

Low Airflow Monitor with Visual Alarm 

Maximum Operator Safety 

Easy Change Filters 

Compact Unit Footprint 

Large Unhindered Working Area 

Ultra Deep Carbon Filters 

# CIRCLAIRE® DOWNFLOW WORKSTATIONS

## Specification

	W700	W1000
External Dimensions (W x D x H)	700mm x 600mm x 840mm	1000mm x 600mm x 840mm
Internal Dimensions (W x D x H)	690mm x 540mm x 400mm	990mm x 540mm x 400mm
Noise Levels	<53db(A)	<57db(A)
Power	250 watts	300 watts
Construction	Epoxy Powder coated Zintec Steel with 316 stainless steel work surface.	



## FEATURES & BENEFITS

Low Airflow Monitor with Visual Alarm



Maximum Operator Safety



Easy Change Filters



Compact Unit Footprint



Large Unhindered Dispense Area



Ultra Deep Carbon Filters



# CIRCULAIRE® 650FDS FORMALIN DISPENSING STATION

The Circulaire 650FDS provides a compact and safe solution to the dispensing of Formalin in Operating Theatres, Pathology Laboratories & Mortuaries.

Free standing, simply place a container of formalin into the base section, connect up and dispense the formalin through the tap. The large capacity carbon filter ensures that no fumes are returned into the working area. Where additional safety is required a filter saturation alarm can be fitted.

External Dimensions (W x D x H)	650mm x 600mm x 1982mm
Internal Dimensions (W x D x H)	600mm x 600mm x 760mm
Working Aperture (W x H)	590mm x 300mm
Face Velocity	0.5 m/sec
Airflow	320m <sup>3</sup> /hr
Noise Level	<57db(A)
Power	400watts

## OPTIONAL FEATURES

Water Supply



Foot Switch Control



## FEATURES & BENEFITS



Easy Clean



Typical Low Noise



Easy Change Filters



Locking Safety Doors



Ultra Deep Carbon Filters

# CIRCLAIRE<sup>®</sup> CHEMICAL STORAGE



Designed for the safe storage of samples and other items containing chemicals such as formalin or peracetic acid, the system ensures that COSHH requirements are met for the safe storage of chemicals and specimens in Pathology Laboratories, Mortuaries and Operating Theatres.

Available in a variety of sizes to suit differing requirements, all cabinets have the same high level of containment. Each full height cabinet has six separate stainless steel shelves, four of which are adjustable or removable, and smoked acrylic lockable doors for added security. The cabinet is constantly ventilated to prevent the build-up of fumes in the storage. The air is drawn through an activated carbon filter to remove fumes before being returned to the laboratory or theatre.

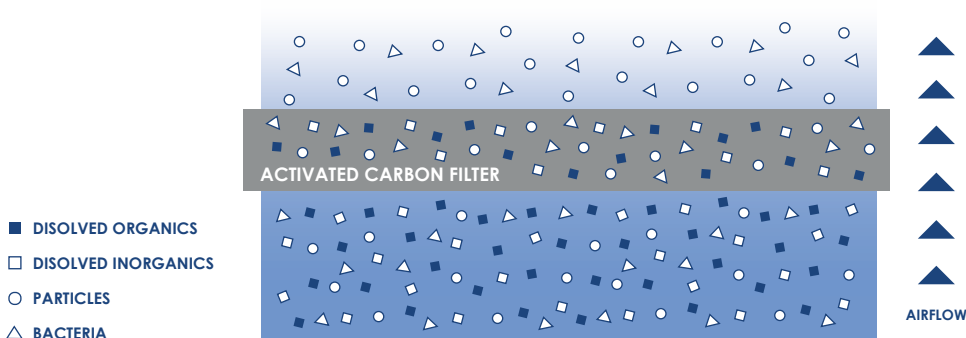
	FSC600L	FSC600	FSC1200L	FSC1200	FSC1300
<b>External Dimentions (W x D x H)</b>	600mm x 500mm x 1300mm	600mm x 500mm x 2200mm	1200mm x 500mm x 1300mm	1200mm x 500mm x 2200mm	1300mm x 500mm x 2200mm
<b>Internal Dimentions (W x D x H)</b>	580mm x 480mm x 900mm	580mm x 480mm x 1800mm	1180mm x 480mm x 900mm	1180mm x 480mm x 1800mm	1280mm x 480mm x 1800mm
<b>Airflow</b>	200m <sup>3</sup> /hr		350m <sup>3</sup> /hr		400m <sup>3</sup> /hr
<b>Noise Level</b>	<53db(A)				
<b>Power</b>	300 watts		500 watts		



# ACTIVATED CARBON

Monmouth Scientific are able to supply a variety of Carbon Filters that are suitable for almost every application. Please see below for the most common Carbon Filters and their intended application.

For multiple applications, we can blend up to four carbon types together in a special filter – Type MCH. Other applications can be accommodated. **Please contact us for more information.**



CARBON CODE:	SUITABLE FOR REMOVAL OF:
AC	General Organic Compounds (iodine, solvents, odours etc)
ACID	Acidic Compounds (and general organics)
ACR	Alkali Compounds (and general organics)
AMM	Ammonia & Amine Compounds (and general organics)
CYN	Cyanide Compounds (and general organics)
ETHER	Ether Compounds (and general organics)
FORM	Aldehydes (and general organics)
SUL	Sulphur Compounds (and general organics)
MCH	Special blend of up to 4 of the above carbon types
ED	Tri-Layered Filter for schools (organic, acid & alkali removed)

## SERVICING



When servicing/calibrating/validating it is important to check all aspects of a cabinet. Monmouth Scientific utilise the latest equipment (Vane Anemometers, Particle Counters, Smoke Generators & Photometers) to carry out:

- **Interior & Exterior Condition checks.**
- **Access flaps and hinges checks.**
- **Lights, Switches & Fan Condition checks.**
- **All seals checked for integrity by DOP Smoke Test.**
- **Pre-filters replaced if necessary.**
- **HEPA filters challenged for integrity by DOP Smoke Test.**
- **Particle counts are taken to ascertain ISO Safety Standard.**
- **Airflow Velocities, Air Visualisation and Test on Alarms.**
- **Checking all work surfaces within cabinet.**
- **Issue a certificate on all test results.**
- **Service record kept on database.**
- **Service card updated and kept on cabinet.**

All services are carried out by skilled, and qualified engineers. We pride ourselves on offering a most comprehensive service to safeguard your employees.

# ABOUT US



Established in 2004, Monmouth Scientific Limited is a family owned company priding ourselves on our commitment and dedication to our customers. It is this dedication that has seen us work with some of the UK's leading private and Government organisations including; the MoD, NHS, Mercedes F1 and BAE Systems.

Based in our modern 30,000sq/ft facility in Bridgwater, Somerset our Engineers and Sales Professionals travel across the UK and overseas offering Sales, Service & Support.

We also work very closely with a select group of specialised Laboratory Equipment suppliers and handle the sales and support of their products in the UK and Ireland on an exclusive basis.

We welcome visitors to our new Demo Lab where we will be happy to demonstrate any of our products and show customers and distributors around our facility.

Monmouth Scientific Limited are proud to be a registered ISO9001:2015 company for Sales, Installation, Service, Support, and Distribution of Medical & Laboratory Equipment.



# Monmouth Scientific

The UK's leading  
designer,  
manufacturer  
and supplier of  
Clean Air  
Technology.

## **Monmouth Scientific Limited**

Units 5 & 6 Kilnside,  
East Quay,  
Bridgwater,  
Somerset,  
TA6 4DB.

[info@monmouthscientific.co.uk](mailto:info@monmouthscientific.co.uk)  
**+44(0)1278 458090**  
[www.monmouthscientific.co.uk](http://www.monmouthscientific.co.uk)